

kingsmen

Kingsmen C.M.T.I. Plc.

DESIGN-LED, QUALITY AND SERVICE DRIVEN



**RETAIL & CORPORATE INTERIORS
EXHIBITIONS & EVENTS
THEMATIC & MUSEUMS
ALTERNATIVE MARKETING
DESIGN STUDIO**

OPPORTUNITY DAY | [Q3/2020] DEC 23, 2020



9/19 Moo 7,
Lam Luk ka Leab Khlong 6 Rd,
Bueng Kham Proi Sub-district,
Lam Luk ka District,
Pathum Thani 12150, Thailand

www.kingsmen-cmti.com

AGENDA



COMPANY OVERVIEW | FINANCIAL PERFORMANCE | RECENT DEVELOPMENT | Q&A

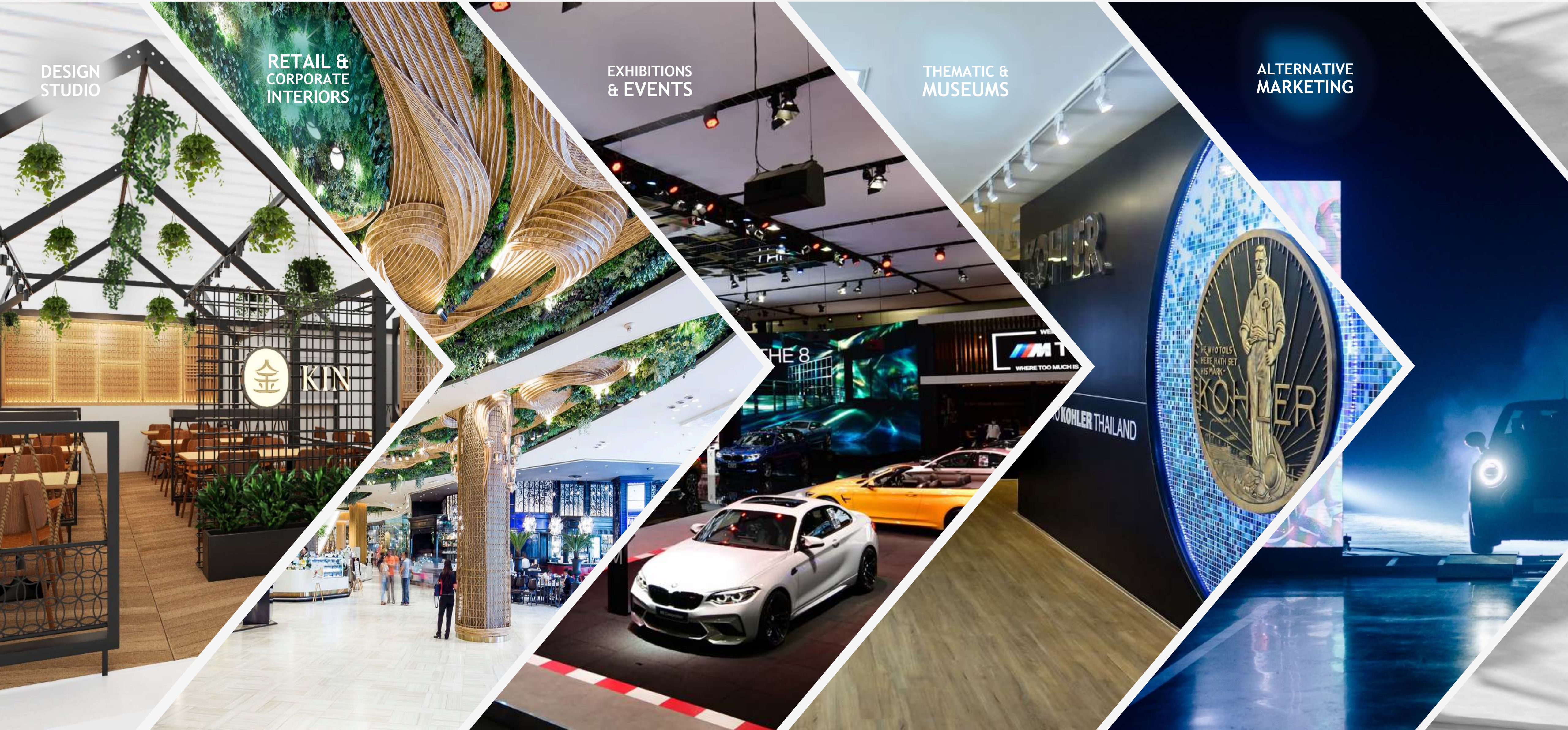
DESIGN
STUDIO

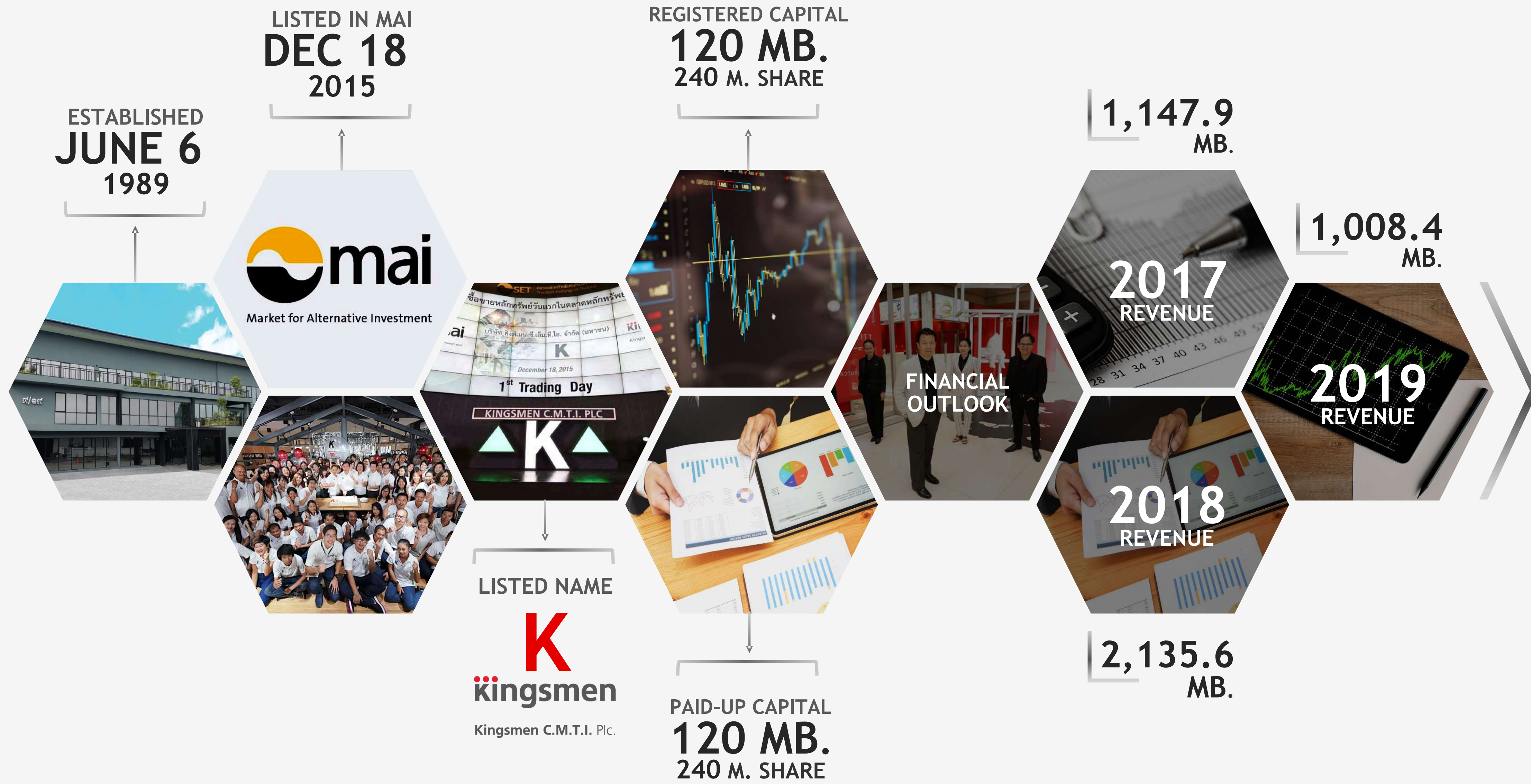
RETAIL &
CORPORATE
INTERIORS

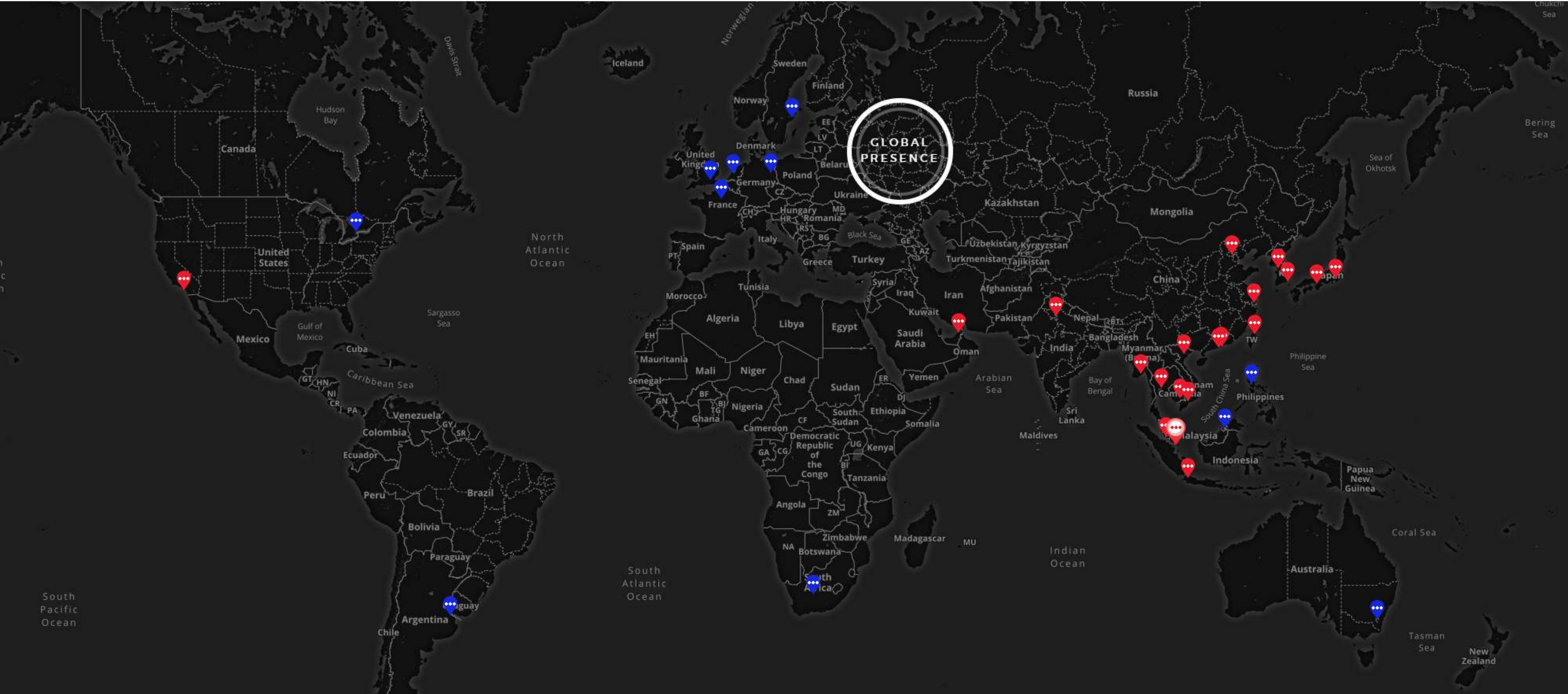
EXHIBITIONS
& EVENTS

THEMATIC &
MUSEUMS

ALTERNATIVE
MARKETING







OFFICE: Singapore (HQ) . Bangkok . Beijing . Busan . Cambodia . Dubai . Hanoi . Ho Chi Minh City . Hong Kong . Jakarta . Kuala Lumpur . Los Angeles . Macao . New Delhi . Osaka . Phnom Penh . Seoul . Shanghai . Shenzhen . Taipei . Tokyo . Yangon

RETAIL SERVICES: US Office

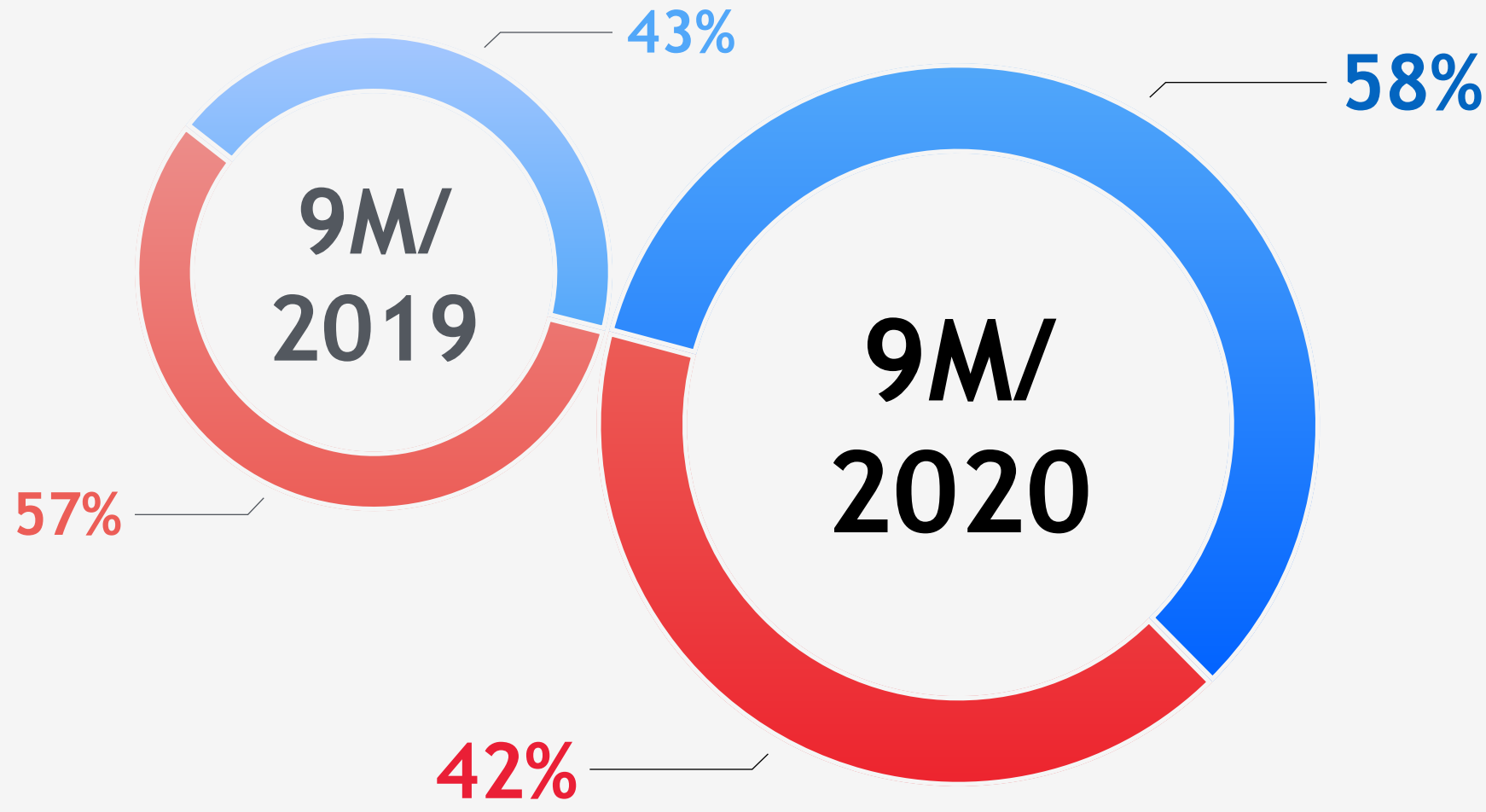
ASSOCIATES: Australia . Brunei . Canada . France . Germany . Latin America . Philippines . The Netherlands . South Africa . Sweden . UK

AGENDA



COMPANY OVERVIEW | **FINANCIAL PERFORMANCE** | RECENT DEVELOPMENT | Q&A

REVENUE by business unit

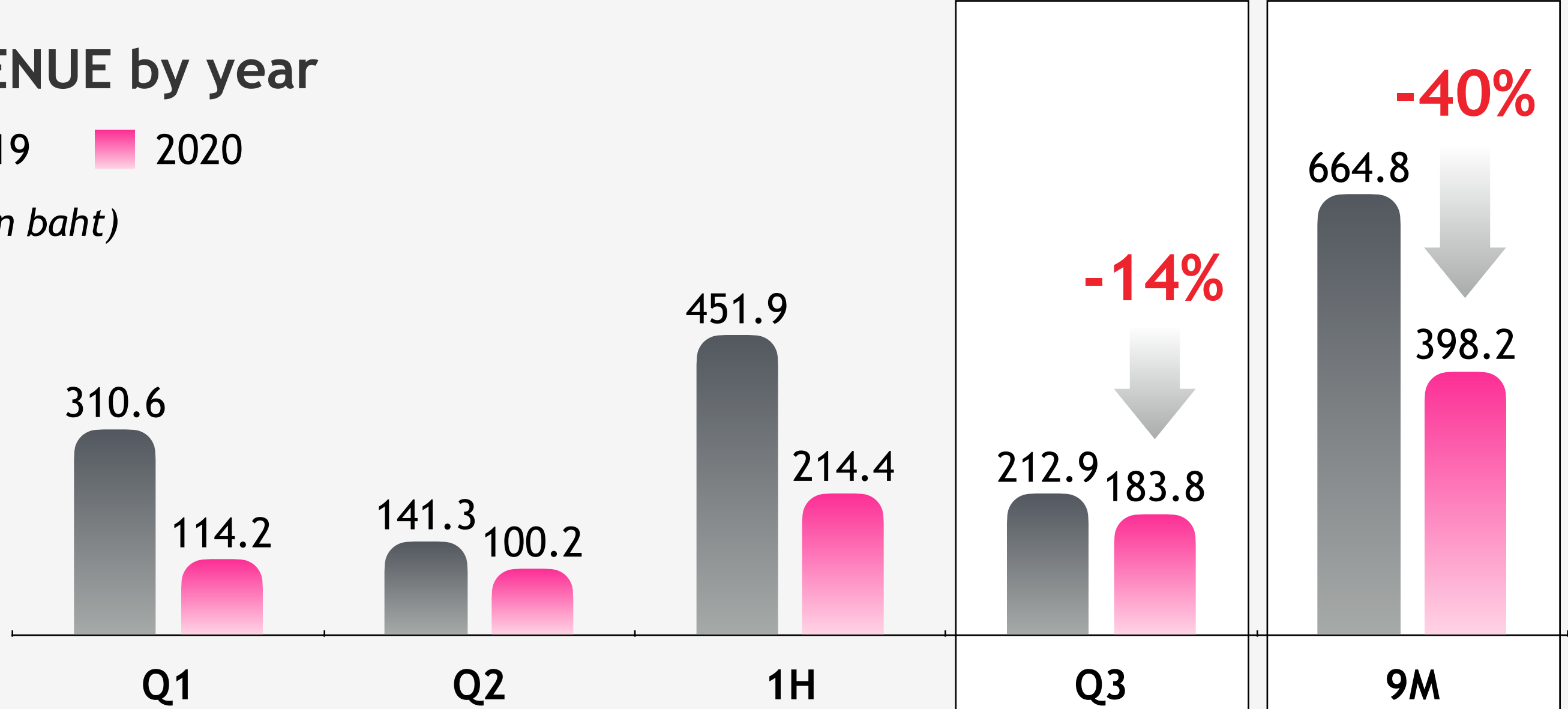


INT **EMA**

INTERIORS | EXHIBITIONS & EVENTS . THEMATIC & MUSEUMS . ALTERNATIVE MARKETING

REVENUE by year

■ 2019 ■ 2020
(Million baht)



	Q1	Q2	1H	Q3	9M
GP	0.1	-74.4	-74.4	-6.6	-81.0
SG&A	-34.0	-32.1	-66.1	-24.6	-90.7
NP	-37.5	-108.4	-145.9	-31.8	-177.7
	-10.3	2.4	-7.9	9.1	1.2
	-34.6	-34.9	-69.5	-20.3	-89.8
	-49.0	-30.6	-79.6	-15.6	-95.2

(Million baht)

25-30% will be booked in Q4 2020 (est.)

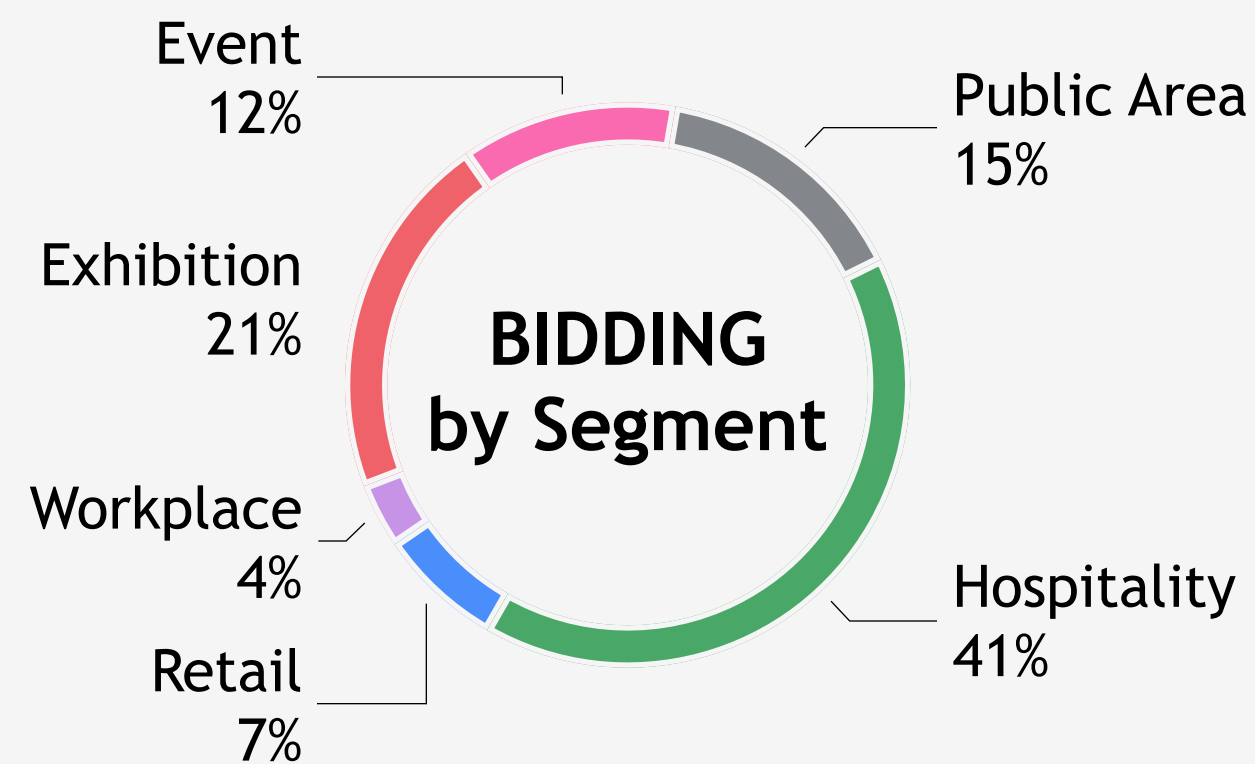
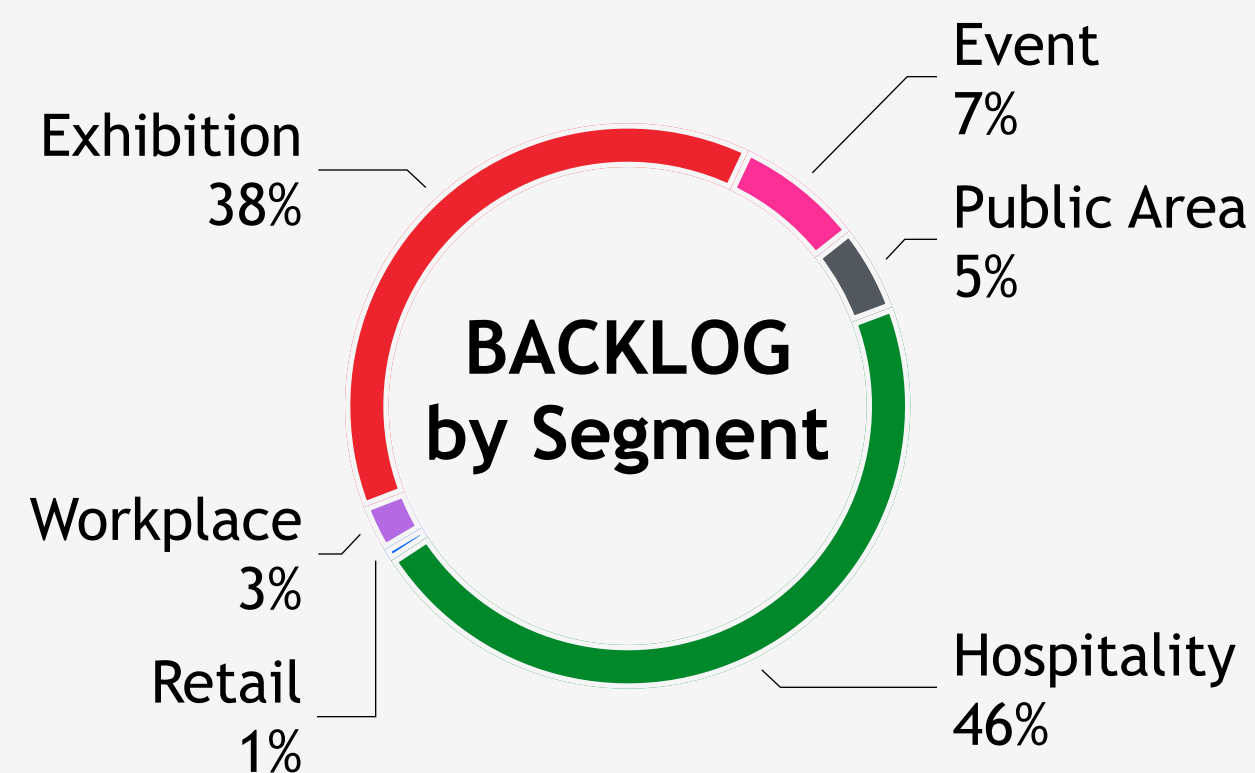


EMA INT



INT EMA

INTERIORS | EXHIBITIONS & EVENTS . THEMATIC & MUSEUMS . ALTERNATIVE MARKETING



AGENDA



COMPANY OVERVIEW | FINANCIAL PERFORMANCE | **RECENT DEVELOPMENT** | Q&A



Big Project

- ▶ Cash Flow
- ▶ Reduce the amount of accumulated losses



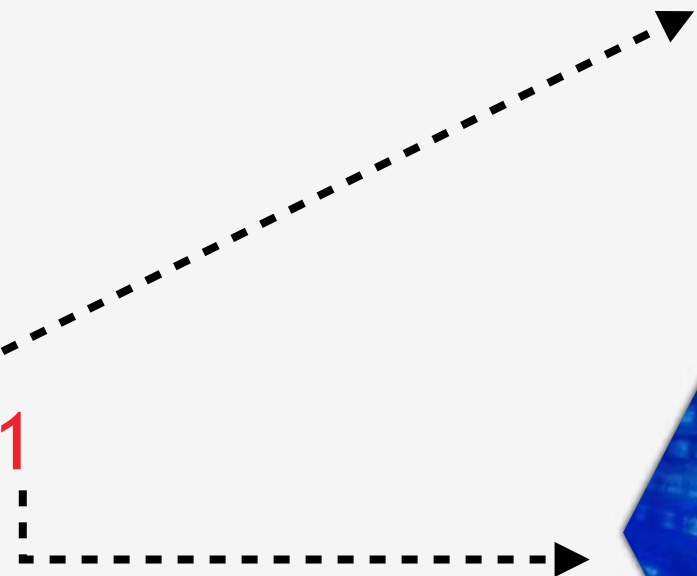
Raise Fund

- ▶ Ratio: 2 : 1 : 1



Right Offering

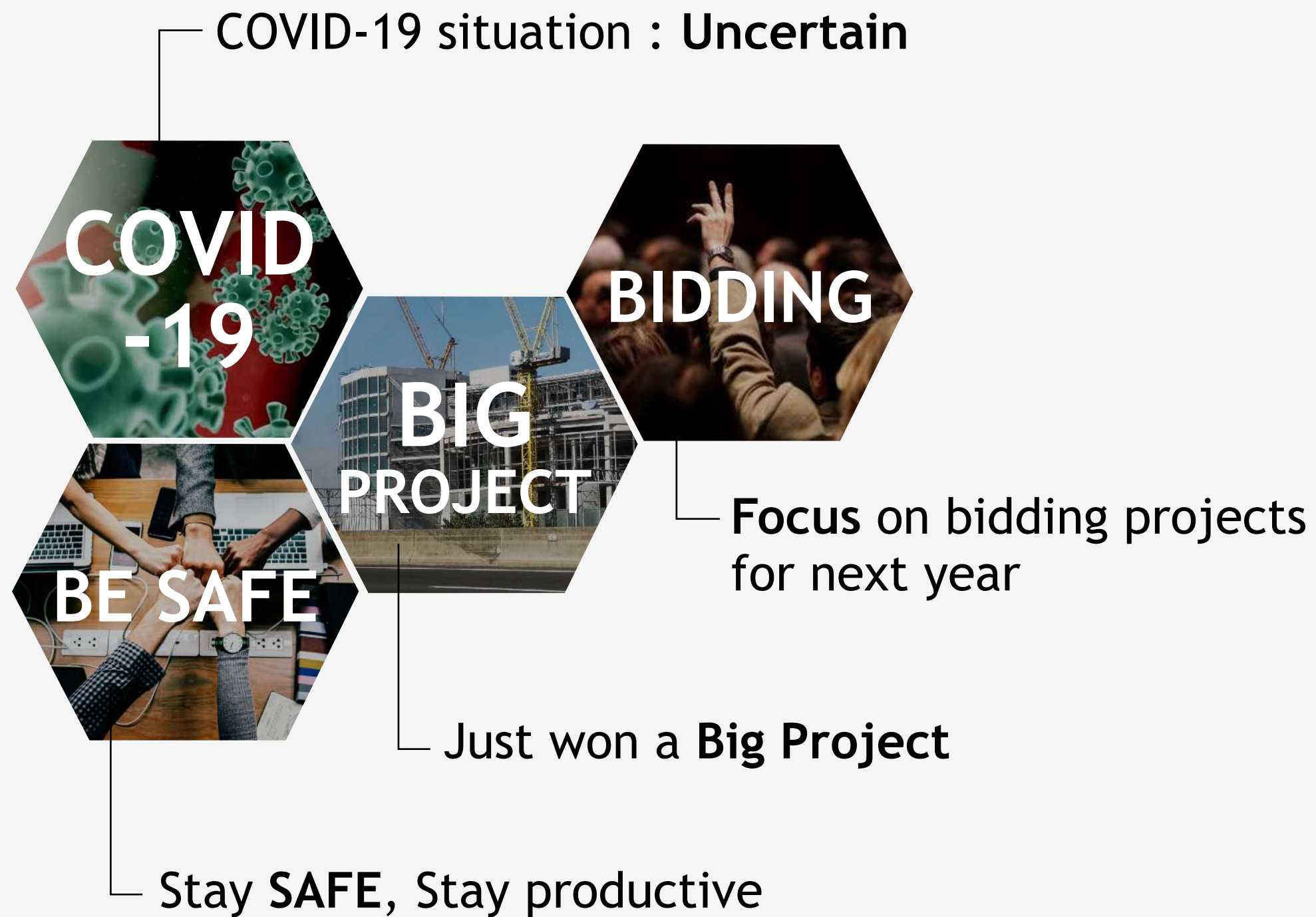
- ▶ Ratio: 2 : 1
- ▶ Price: 0.50 baht/share



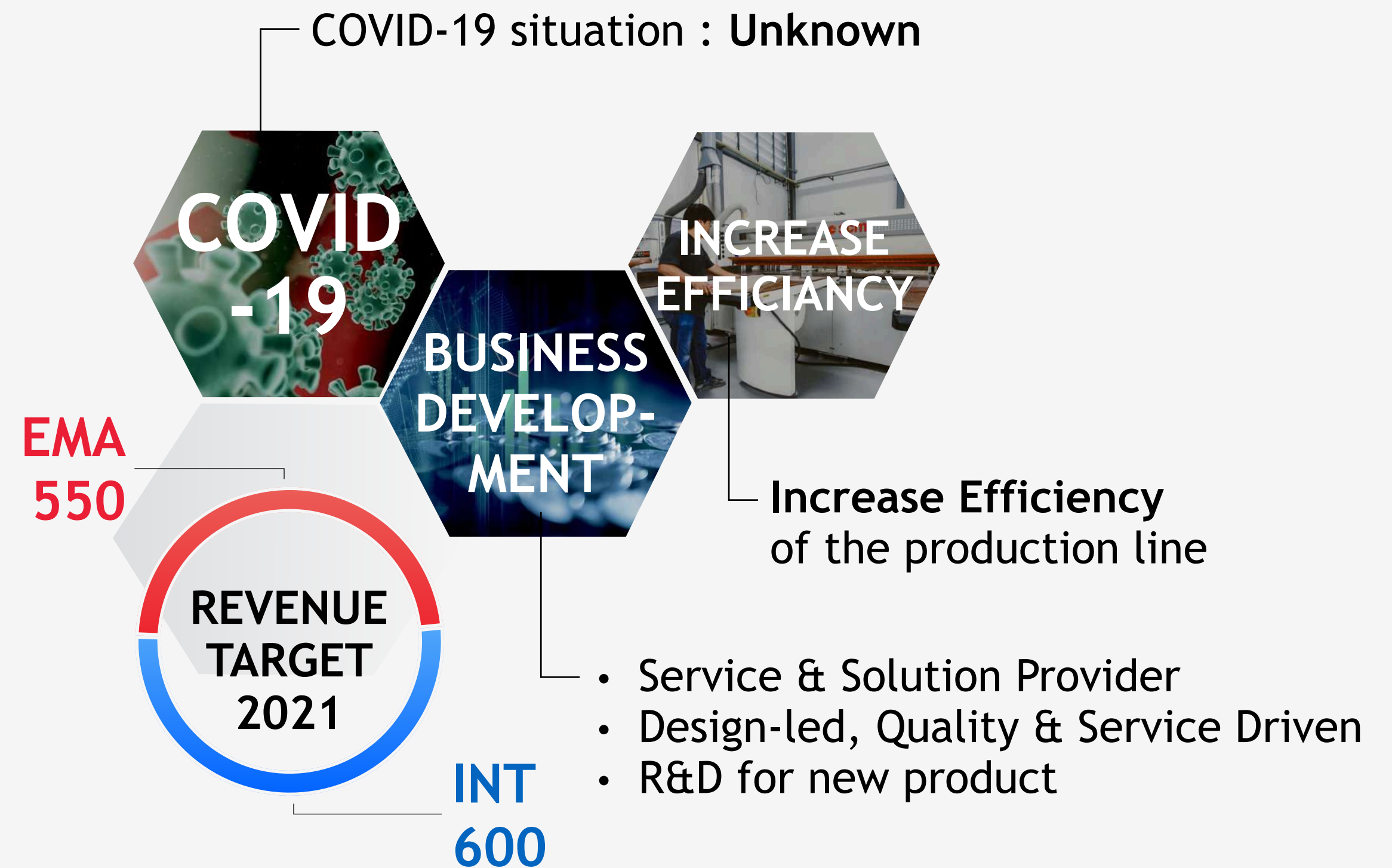
Warrant

- ▶ Free
- ▶ Period: 18 months
- ▶ Conversion Ratio: 1:1 @ 1 baht/share
- ▶ Conversion period: every 3 months

Q4 2020



2021



AGENDA



COMPANY OVERVIEW | FINANCIAL PERFORMANCE | RECENT DEVELOPMENT | **Q&A**

Thank You.

kingsmen

Kingsmen C.M.T.I. Plc.

9/19 Moo 7,
Lam Luk ka Leab Khlong 6 Rd,
Bueng Kham Proi Sub-district,
Lam Luk ka District,
Pathum Thani 12150, Thailand

www.kingsmen-cmti.com